

Neurology for the PCP

FRIDAY, NOV. 22 | DETROIT MARRIOTT TROY

Description – This conference is geared toward primary care partners. The key objectives are to help the primary care provider identify neurological symptoms and treatment options.

Target Audience – Physicians, physician assistants, nurses, nurse practitioners, physical and occupational therapists, allied health, residents, fellows and medical students in the specialties of family medicine, internal medicine and pediatrics.

Objectives – At the conclusion of this activity, learners should be better able to:

- identify signs and symptoms associated with specific neurologic disorders
- explain treatment options for patients with neurological symptoms
- instruct participants on guidelines for patient referral
- describe follow up recommendations to reduce readmissions

Faculty disclosure – All speakers and members of the planning committee have been asked to disclose any relevant relationships they may have with commercial interests. The presence or absence of relationships will be disclosed at the time of the meeting.

Accreditation and designation statements

Allopathic Continuing Medical Education

Beaumont Health is accredited by the Accreditation Council for Continuing Medical Education (ACCME) to provide continuing medical education for physicians.

Beaumont Health designates this live activity for a maximum of 7.5 AMA PRA Category 1 Credit(s)[™]. Physicians should claim only the credit commensurate with the extent of their participation in the activity.

Osteopathic Continuing Medical Education

Beaumont Health is accredited by the American Osteopathic Association to provide osteopathic continuing medical education for physicians.

Beaumont Health designates this program for a maximum of 7.5 AOA Category 1-A credits and will report CME and specialty credits commensurate with the extent of the physician's participation in this activity.

Michigan Physical Therapy Association Continuing Medical Education

This course has been approved by:

- The Michigan Physical Therapy Association – CEUL042758 for 7.50 CEUs
- All other Health Care Professionals will receive 7.50 Contact Hours

Non-physician professionals should check with their individual credentialing bodies to confirm that participation in this CME activity will be approved for credit. CME credits can be used to meet the continuing education requirements needed for Michigan physician assistant and nursing relicensure without limitation.

NON-PROFIT ORG
U.S. POSTAGE
PAID
PERMIT NO 404
ROYAL OAK
MICHIGAN

Beaumont

Neuroscience Center
3555 West 13 Mile Road, Suite N120
Royal Oak, MI 48073

**Neurology for
the PCP**

**FRIDAY, NOV. 22, 2019
7:30 A.M. TO 5 P.M.**

DETROIT MARRIOTT TROY
TROY, MI

P602941_21621_082319

Neurology for the PCP

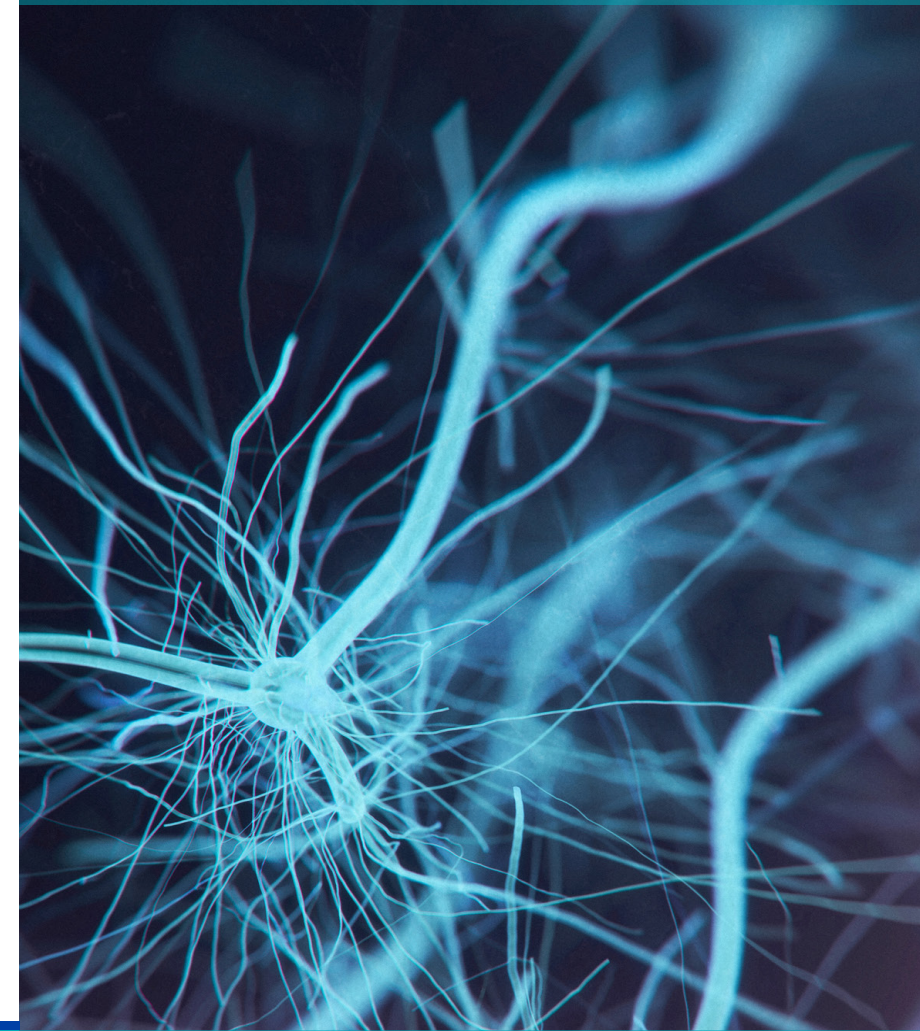
(Primary Care Partners)

Care and management of the neurology patient
for primary care and pediatric physicians

**FRIDAY, NOV. 22, 2019
7:30 A.M. TO 5 P.M.**

Detroit Marriott Troy, Troy, MI

Beaumont



FACULTY AND PLANNING COMMITTEE*

***Activity Director Daniel Menkes, M.D.**, chief of Neurology, Beaumont, Royal Oak, professor, OUWB School of Medicine

M. Mazen Al-Hakim, M.D., Neurology, Beaumont, Troy, assistant professor, Neurology, OUWB School of Medicine

Lauren Aymen, D.O., Neurology, Beaumont, Royal Oak, instructor, Neurology, OUWB School of Medicine

Tarif Bakdash, M.D., Pediatric Neurology, Beaumont Hospital, Royal Oak, MI

Jonathan Fellows, D.O., Neurology, Beaumont, Royal Oak, assistant professor, Neurology, OUWB School of Medicine

Rebecca Grysiwicz, D.O., Neurology, Beaumont, Royal Oak, assistant professor, Neurology, OUWB School of Medicine

Suleiman Kojan, M.D., Neurology, Beaumont, Royal Oak, associate professor, Neurology, OUWB School of Medicine

Adam Kuhlman, D.O., Neurology, Beaumont, Royal Oak, assistant professor, Neurology, OUWB School of Medicine

M. Eileen McCormick, D.O., Pediatrics, Beaumont Hospital, Royal Oak, MI, Assistant Professor, Pediatrics, OUWB School of Medicine

***Anne Marie Michon, NP**, Pediatrics, Beaumont, Royal Oak

Susan Musto, NP, Neurology, Beaumont, Royal Oak

Christopher Parres, M.D., Neurology, Beaumont, Royal Oak, assistant professor, Neurology, OUWB School of Medicine

Alexa Shaw, M.D., Pediatrics, Beaumont, Royal Oak

***Lori Sheridan, BBA**, Neuroscience Outreach Coordinator, Beaumont, Royal Oak

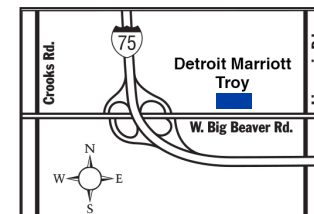
Gary Trock, M.D., Neurology, Beaumont, Royal Oak

AGENDA

7:30-7:40 a.m.	Welcome – Daniel Menkes, M.D.
7:40-8:10 a.m.	Acute stroke – Treatment and prevention M. Mazen Al-Hakim, M.D.
8:10-8:40 a.m.	Cryptogenic Stroke – Rebecca Grysiwicz, D.O.
8:40-8:55 a.m.	Stroke panel discussion
8:55-9:40 a.m.	Adult dementia – Jonathan Fellows, D.O.
9:40-10 a.m.	Break
10-10:30 a.m.	Tics and Tourette's syndrome from a pediatrics perspective Tarif Bakdash, M.D.
10:30-11 a.m.	Adult movement disorders – Update on treatment options Adam Kuhlman, M.D.
11-11:30	Blazing New Trails in Pediatric Neuromuscular Eileen McCormick, DO
11:30 to noon	Commonly encountered adult neuromuscular Daniel Menkes, M.D.
Noon to 1 p.m.	Lunch
1-1:35 p.m.	Pediatric headache – Gary Trock, M.D.
1:35-2:10 p.m.	Adult headache management – Lauren Aymen, M.D.
2:10-2:45 p.m.	Acute concussion and post concussive syndrome Susan Musto, NP
2:45-3:05 p.m.	Break
3:05-3:40 p.m.	Pediatric seizure identification and management Alexandra Shaw, M.D.
3:40-4:15 p.m.	Adult seizures vs. epilepsy - referral and management Christopher Parres, M.D.
4:15-4:50 p.m.	MS recognition of silent symptoms and treatment Suleiman Kojan, M.D.
4:50-5 p.m.	Closing Remarks – Daniel Menkes, M.D.

The agenda and number of CME credits available are subject to change.

Detroit Marriott Troy
200 West Big Beaver Road
Troy, Michigan 48084



Neurology for the PCP

FRIDAY, NOV. 22 | DETROIT MARRIOTT TROY

Registration link:

<https://beaumont.cloud-cme.com/neuropcp2019>

Registration Fees	Early Bird Rate	Regular Rate	Onsite Rate
	On or before 10/11/19	Between 10/12/19 and 11/19/19	11/22/19
Beaumont Physician	\$125	\$150	\$170
Non-Beaumont Physician	\$150	\$175	\$195
Nurse Practitioner (NP), Physician Assistant (PA), Resident and Fellow	\$100	\$125	\$145
Nurse and Allied Health	\$75	\$100	\$120
Non-OUWB Medical Student	\$35	\$45	\$65
OUWB Medical Student	\$25	\$35	\$55

Cancellations or refund requests must be received by **Nov. 19**.

A processing fee of \$25 will be assessed to all cancelled registrations. Cancellation and refund requests after November 19, 2019 will not be honored. To cancel a registration, please send an email to **cme@beaumont.edu** with "Cancellation" in the subject line.

Questions

For registration questions, please call **Becky Kirk** at **947-522-1840**

For CME related questions, contact **cme@beaumont.edu**

For event related questions, contact **Lori Sheridan** at **248-551-2309** or **lori.sheridan@beaumont.org**

Beaumont is committed to making its activities accessible to all individuals. If you are in need of a special accommodation, please do not hesitate to contact us.